

TECHNICAL DATA SHEET & CERTIFICATE OF CONFORMITY

File: dromex tds DHCS A1
Revision: 01 (15 February 2016)
Page: 1 of 2



Dromex

DROMEX SINGLE ORGANIC UNIFIT FILTER DHCS-A1

UNIFIT FILTERS

Description:

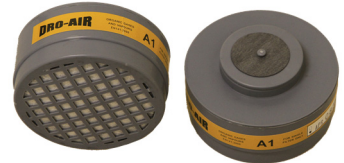
These filter cartridges are designed to work with the DRO-AIR MIDI SINGLE HALF MASK DH-101.

The cartridge is designed for the intended use of:

Organic Vapours with boiling point greater than 65°C and good warning properties

Protection against particulates if used in conjunction with the DROMEX UNIFIT half masks and DHPF pre filters.

EN14387:2004+A1:2008



Specifications:

Breathing Resistance:	@30 l/min	>1.0 mbar
	@95 l/min	>4.0 mbar
Gas Capacity:	Break through time in minutes (BTT) min	
Cyclohexane (C ₆ H ₁₂)	BTT >70min @ 10mbar	
Maximum Filter Capacity	Low 1000ppm	



Compliance & Conformity:

NRCS Homologated to SANS 10338: 1999 as required by the Occupational Health and Safety Act, 1993 (Act No. 85 of 1993), and the Mine Health and Safety Act, 1996 (Act No. 29 of 1996). Gas filters to EN14387:2004+A1:2008. NRCS Type approval No.: AZ 2011/70

CE EN approval as per BSI 0086, UNIFIT combination filter as per approval from Octel (RNA211).

Testing in accordance with EN141:1990 as per test report 954001 (RNA2.1.1) and further approval from Protechnik (0316) to EN14387:2004+A1:2008 as per test report F4090(a) for EN14387:2004 SINGLE A1.

NRCS APPROVAL AZ2011/70

Quality System as per ISO9001:2008 certificate HK01/00703 as issued by SGS, UKAS approval number 005.

Packaging, Storage & Obsolescence:

Each Twin filter cartridge is shrink wrapped to prevent contamination. The filters are packed two per retail pack and 70 packs per carton. NRCS homologated in the retail packs with one set of cartridges (two cartridges).

Store in a cool dry place. The expiry date of each item is indicated on the cartridge.



Cleaning & Maintenance:

The exterior of the filter can be cleaned with the use of a dry cloth. Solvents must not be used and care should be taken to ensure no water enters the filter. Cleaning of the filter does not extend its life. It is recommended that DROMEX UNIFIT pre-filter are used in combination with these filters to extend the life of this gas filter.

Special Instructions:

All respiratory selection should be read in conjunction with BS EN 529:2005 for selection, use care and maintenance.

Do not use these respirators or enter in area where:

The Oxygen concentration is not known or is less than 19.5%.

Contaminants or their concentrations are unknown or are known to be immediately dangerous to life or health. Particulate or gas concentrations exceed levels fixed by the applicable health and safety regulations.

The requirement for leak tightness is unlikely to be achieved if worn against a beard or facial stubble.

Not to be used for firefighting.

These respirators do not supply oxygen. Do NOT use in oxygen deficient atmospheres (e.g. tanks or other poorly ventilated areas).

Do not use in explosive atmospheres.

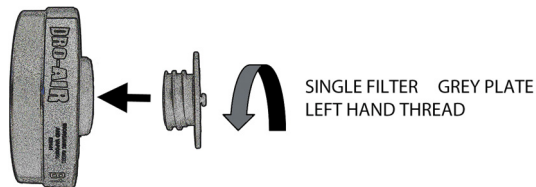
The lifetime of a filter depends on many factors including the work rate, the air flow and the concentration of the contaminant in the atmosphere.

A gas filter should be changed immediately when chemical breakthrough of a contaminant is detected by smell, taste or any other means. A dust filter should be changed when breathing becomes impaired.

The UNIFIT SINGLE FILTER CARTRIDGE is for use with SINGLE filter masks only.

DO NOT USE TWIN CARTRIDGES WITH SINGLE MASKS.

Changing filter cartridge: Remove pre-filter cover if being used and unscrew filter cartridge. Please note that all the DROAIR SINGLE filter cartridges have a left hand thread. Remove from the mask together with connector and dispose of the used components hygienically and safely. Clean the half mask as per the instructions. Remove the new UNIFIT filters, complete with valve from the wrapping and replace the filters onto the mask.

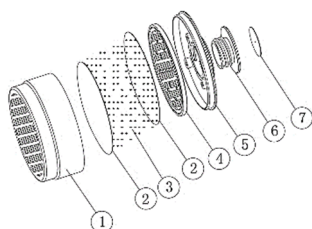


Use genuine DROMEX UNIFIT gas cartridges and particulate pre-filters.

UNIFIT Pre-Filters

The Pre-Filter DHCS-P2PF is designed to be used with the UNIFIT Single respirators only. The DHCS-P2PF pre filter if used with this A1 gas filter will form a combination filter A1P2 SINGLE. The attached filter is a Particle filter as designated by its class and will only protect against such hazards as determined by EN143:2000. These filters extend the life of the gas cartridges by preventing clogging of the gas component.

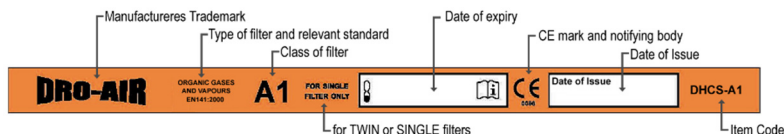
Materials:



- 1 Grey Polystyrene filter case
- 2 Polyethylene terephthalate pre filter pad
- 3 Activated carbon RA165g
- 4 Polystyrene net support
- 5 Grey Polystyrene filter lid (back plate)
- 6 Grey Polystyrene valve seat
- 7 Rubber valve piece

Marking:

Each cartridge is marked as indicated below:



Disposal:

All industrial waste should be disposed of correctly according to local regulations and good disposal practice. Respiratory protective devices should be disposed of considering the hazardous substance they were used for. Please consider recycling.

